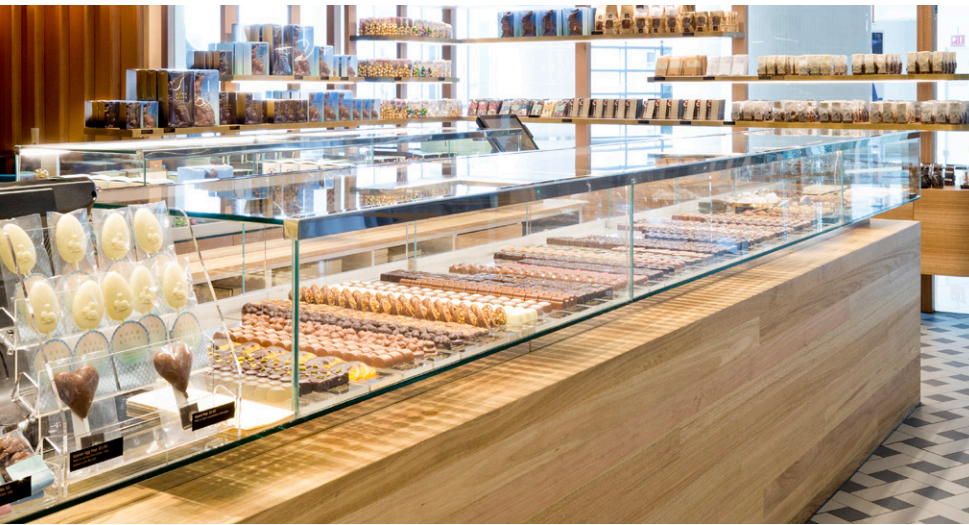


TASMANIAN OAK



TASMANIAN OAK

TASMANIAN OAK IS NOT A SINGLE SPECIES

Tasmanian Oak is a marketing name developed to sell a group of three very similar Tasmanian Eucalyptus species of Eucalyptus Regnans/Obliqua and Delegatensis or commonly known in their single species as Messmate/Stringybark, Mountain Ash and Alpine Ash. The marketing name was developed by the Tasmanian Timber Industry to develop an Australian and International market for these species.

This group of species are similar in appearance and texture. This species is all quarter sawn and once kiln dried, the timber is dimensionally very stable. The timber is light in colour, varying from straw to pinkish brown with occasional intermediate shades of cream to pink. It is recognised for its excellent staining qualities, which allow ready matching with other timbers, finishes or furnishings. Suitable for a wide variety of internal applications from flooring, cladding and joinery applications. It is not suitable for exposed exterior applications.



COMMON NAME	Tasmanian oak
LOOK & FEATURES	Moderately coarse but even texture grain sometimes interlocked.
BOTANICAL NAME	Eucalyptus delegatensis Eucalyptus regnans Eucalyptus obliqua
COLOUR	Light varying from straw to pinkish brown with intermediate shades of cream to pink
COMMON USES	A wide range of internal applications including interior cladding flooring and bespoke joinery

PROPERTIES

DENSITY (KG/M3)	
GD	1000
ADD	650
HARDNESS KN (JANKA)	
Green	5.3
Dry	7.1
DURABILITY CLASS	
3	
STRENGTH GROUP	
S3/SD3	
JOINT GROUP	
J3/JD3	
SHRINKAGE	
Radial % (approx.)	> 5.0
Tangential % (approx)	8.5
STRUCTURAL GRADES	
Unseasoned	F11/F14/F17
Seasoned	F22/F27
EARLY FIRE HAZARD INDICES	
Ignitability	Not Available
Spread of Flame	Not Available
Smoke Development	Not Available
TERMITE RESISTANT	
Yes	
LYCTID SUSCEPTIBLE SAPWOOD	
Sapwood is generally susceptible, however Tasmanian Oak is usually sold free of sapwood.	